



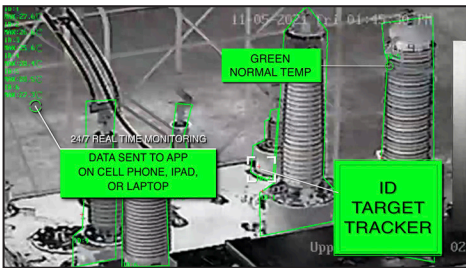
IIS2157 UTILITY IR SYSTEM

Welcome to the next evolution of monitoring and safety technology - the IIS2157 Utility IR System - a state-of-the-art wireless infrared/thermal/optical imaging camera that provides 24/7 real-time alarming, monitoring, and reporting to your laptop, PC, tablet, or smart phone.

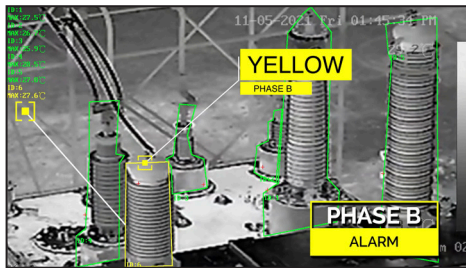
NetCloud management allows for remote support and troubleshooting for the ultimate peace of mind, as well as a reliable 24/7 Amazon AWS server system with built-in memory capable of storing two days worth of IR/Optical footage.

Access the PTZ through the internet and monitor accurate data/temperature readings to help prevent potential catastrophes to power plants and substations, reducing costs, and most importantly: pre-emptive action to maintain worker safety.

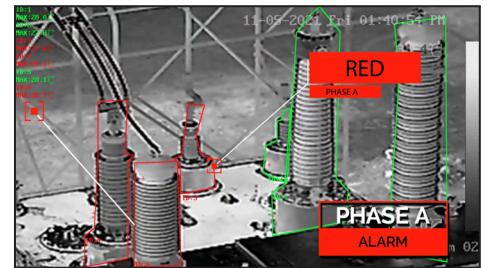
IIRS2157 Utility IR System - Look To The Future



Green Indicates Normal Temperature



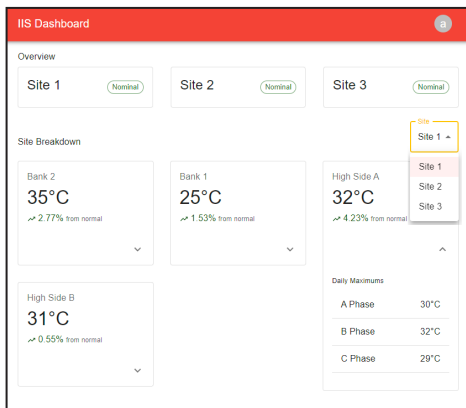
Yellow Indicates First Alarm Setting



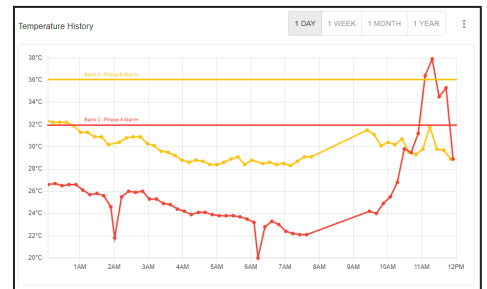
Red Indicates Second Alarm Setting

Events	
Bank 1 - Phase A 33°C (2°C Over Alarm)	11/5/2021, 11:55:19 AM
Bank 2 - Phase B 30°C (1°C Over Alarm)	11/5/2021, 09:24:43 AM
Bank 1 - Phase A 35°C (4°C Over Alarm)	11/4/2021, 03:51:54 PM
High Side Bank - Phase C 35°C (2°C Over Alarm)	11/4/2021, 08:21:23 AM

Events is a log of all alarms that have been triggered



Overview tells you at a glance if anything needs your attention. You can see all sites at once and get detailed readouts of equipment for each site



The history graph lets you pan, zoom, and compare temperatures across any two equipment





708 Fiero Lane, Ste. 12
San Luis Obispo, CA 93401

Cell: 805 • 570 • 2912
Telephone: 866 • 451 • 2257
Fax: 805 • 576 • 7629

sales@iis.com
www.infraredinspectionssystems.com

IIS2157 IR UTILTY SYSTEM TECHNICAL SPECIFICATIONS

SIZE	10.5 X 16.65 X 7.8 (W x H x D)
WEIGHT	19 LBS
WORKING TEMPERATURE	-20° TO 150° C (-4° TO 302° F)
ALARMS & TYPE	VISUAL OVER 300 ALARM PRESETS
INGRESS PROTECTION	IP66 STANDARD, 6000_v LIGHTNING PROTECTION SURGE
WORKING HUMIDITY	UP TO 95% WITH WIPER
SECURITY	USER AUTHENTICATION, MAC ADDRESS BINDING, HTTPS EN- CRYPTION, IEEE ACCESS CONTROL IP ADDRESS FILTERING, & WEB BROWSER
PROTOCOLS	HTTP, HTTPS, FTP, SMTP, SNMP, DNS, NTP, RTSP, RTCP, RTP, TCP, UDP, IGMP, DHCP, & PPOE
POWER	24 VAC, 5A, MAX 60 W
CAMERA	640 X 512 RESOLUTION DIGITAL ZOOM 2x 4x 8x 16x THERMAL FOV 12 x 9.9 VISUAL FOV 56 x 33.7 24 FPS IR DISTANCE UP TO 200 METERS PTZ 360 CONTINUOUS ROTATE, TILT, -20 TO 90° (AUTO FLIP) 327,680 PIXEL TEMPERATURE POINTS 8 - 14 MICRONS THERMAL SENSITIVITY: 35 MK TARGET COLORIZATION WHITE HOT AND BLACK MODE REFRESH RATE - OPTICAL (60 HZ); THERMAL (30 HZ)